

L'ART
AU SOMMET



LORENZO QUINN SOLO SHOW
ABOVE COURCHEVEL SNOW

L'ART AU SOMMET

EDITION 2022-2023

Courchevel is not a resort like the others. Everything is bigger, higher, more spectacular and the sense of the exceptional is second nature...

For 14 years now, we have had the pleasure of offering an artistic interlude to as many people as possible and of promoting our artists within this emblematic French resort.

After the success of Salvador Dali's solo show in 2018, Galeries Bartoux, in collaboration with the Courchevel Town Hall, wanted to highlight the works of an internationally renowned sculptor. After the Pyramids of Giza in Egypt, the turquoise canals of Venice and the great parks of London, Lorenzo Quinn's sculptures will be on display for the very first time in the heart of the Alps.

Defying gravity, poetic and true odes to Love, **7 monumental artworks by Lorenzo Quinn will adorn the summits, the heart of the resort and the Galerie Bartoux Courchevel throughout the winter season.**

Inspired by Michelangelo, Gian Lorenzo Bernini and Auguste Rodin, the sculptures of this nature lover couldn't have asked for a better setting. **His figurative artistic approach conveys his passion for eternal values and authentic emotions such as peace and unity.** Through his art, he wishes to raise awareness of the beauty of nature and the need to preserve it.

Attend a weekly guided tour in partnership with the FACIM Foundation:
<https://courchevel.com/en/page/art-au-sommet?&>



L'ART AU SOMMET

« This exhibition has been a long time coming.

I have always wished to have my art displayed on the beautiful slopes of Courchevel and when Robert Bartoux offered me the possibility to exhibit my work on the mountains this year, I accepted with great joy and honour.

I always believed that my larger works are best viewed in a natural environment to accompany the beauty and majesty of nature, who is the best artist of all.. »

Lorenzo Quinn





L'ART AU SOMMET

« For the past 14 years, Art at the Summit has been a must-see exhibition to be (re)discovered on the ski area and in the resort centre.

Every winter, from December to April, Courchevel is exposed through the works of internationally renowned artists.

For this new edition and for the first time in the heart of the Alps, we are delighted to welcome the monumental sculptures of Lorenzo Quinn.

As a nature lover, the artist wishes to use his creations to raise awareness of the environment and the need to build a sustainable world. Strong values that we share.

We are proud of this collaboration between the commune of Courchevel and the Galeries Bartoux, which makes contemporary art accessible to all.

To further this discovery, guided tours of the exhibition are organised throughout the season, in partnership with the Facim Foundation.

Wonderful discovery for all. »

Jean-Yves Pachod, Mayor of Courchevel



L'ART AU SOMMET

LORENZO QUINN AT COUCHEVEL !

The inauguration of the XIVth edition of "L'ART AU SOMMET" took place on Friday 6th January 2023 in the presence of the artist Lorenzo Quinn, the mayor of the resort Jean Yves Pachod and his elected representatives Géraldine Vischi, Marie-Noëlle Perrier and David Dereani.

The Mayor awarded the Courchevel 1850 medal to the sculptor for his contribution to the artistic and cultural influence of the resort.

Nearly 80 friends, art lovers and collectors then gathered at the Galerie Bartoux, located in the Espace Diamant, to share a moment of encounter and conviviality with Lorenzo Quinn.

PHOTOS OF THE EXHIBITION AND THE INAUGURATION :

<https://bit.ly/3C3hzYY>



VIZELLE SUMMIT

« FINDING LOVE »



« If there were complete silence, it might be possible to hear the sounds and sense the feelings when two people fall in love. » - Lorenzo Quinn

Technique : Patinated bronze

Dimensions : 234 x 203 x 70 cm

Artwork available for sale

BIOLLAY SUMMIT

« INFINITE LOVE »



*« Through the challenges of time
we must always hold on to the
golden moments spent together;
the rainbow always appears after
the storm. » - Lorenzo Quinn*

Technique : Polished bronze

Dimensions : 208,5 x 90 x 90 cm

Artwork available for sale





COEUR DE COURCHEVEL

« THE FORCE OF NATURE »



« We humans think of ourselves as supreme beings in absolute control of our destiny and our surroundings. We live with a false sense of security, only to be awakened by Mother Nature's fury. After having seen the ravaged coast of Thailand and the hurricane that affected the southern States, I decided to create a sculpture dedicated to Mother Nature. This would be reminiscent of the early statues made as peace offerings to the gods in the hope of quenching their anger. In essence, people are not very different today from the people who lived thousands of years ago. We still devote ourselves to symbols in order to escape our destiny. » - Lorenzo Quinn

Technique : Aluminium

Dimensions : 287 x 250 x 90 cm

Artwork available for sale

COEUR DE COURCHEVEL

« THE FOUR LOVES »



« Inspired by C. S. Lewis's Four Loves, I chose to use the four different loves as the foundation on which our world rests: faith and affectionate love (agape) in pure polished bronze; passionate love (eros) in strong yet fragile red stone; friendship (philia) reflected with others in stainless steel; and family love (storge), organic and live, in warm wood. » - Lorenzo Quinn

Technique : Bronze, Aluminium, Tile
Wood, Stainless Steel, Red Travertine

Dimensions : 258 x 160 x 76 cm

Artwork available for sale



ART
LORENZO QUINN
« THE FOUR LOVES »
258 x 160 x 76 cm
Bronze, Aluminium, The Wood, Stainless Steel, Red Travertine
Lorenzo Quinn
www.lorenzoinn.com



ESPLALANDE FRONT DE NEIGE

« HAND OF GOD »



« One night a man had a dream. He dreamed he was walking along the beach with the Lord. Across the sky flashed scenes from his life. For each scene, he noticed two sets of footprints in the sand: one belonging to him, and the other to the Lord. When the last scene of his life flashed before him, he looked back at the footprints in the sand. He noticed that many times along the path of his life there was only one set of footprints. He also noticed that it happened at the lowest and saddest times in his life. This really bothered him and he questioned the Lord about it. 'Lord, You said that once I decided to follow You, You'd walk with me all the way. But I have noticed that during the most troublesome times in my life, there is only one set of footprints. I don't understand why when I needed You most You would leave me.' The Lord replied, 'My son, my precious child, I love you and would never leave you. During your times of trial and suffering, when you saw only one set of footprints, it was then that I carried you.' » - Mary Stevenson

Technique : Bronze

Dimensions : 185 x 525 x 235 cm

Artwork available for sale



RUE PARK CITY

« GIVE AND TAKE III »



«It is vital to find a balance in life. Nature has been trying to teach us that lesson since the beginning of time. All opposites meet in their extremes. You cannot fully enjoy receiving if you have never given, because you will not recognize the gift you have received if you value only what is difficult to obtain. » - Lorenzo Quinn

Technique : Bronze and corten steel

Dimensions : 336 x 310 x 70 cm

Artwork available for sale

COURCHEVEL CHURCH

« GRAVITY MALE, HOLLOW »



« It is essential to find a balance in life; a balance that is often achieved with the help of the people who surround us and hold us firmly to the ground. » - Lorenzo Quinn

Technique : Aluminium and stainless steel

Dimensions : 395 x 330 x 100 cm

Artwork available for sale



WORK IN PROGRESS ...

Discover the spectacular behind-the-scenes installation of Lorenzo Quinn's monumental sculptures at an altitude of more than 2500 m.

These gravity-defying works of art, hoisted to the top of the mountains, are a sensation!



PEOPLE ARE ALREADY SHARING!



[cathyguetta](#)



[pontmonica](#)



[trippingwithgunjan](#)



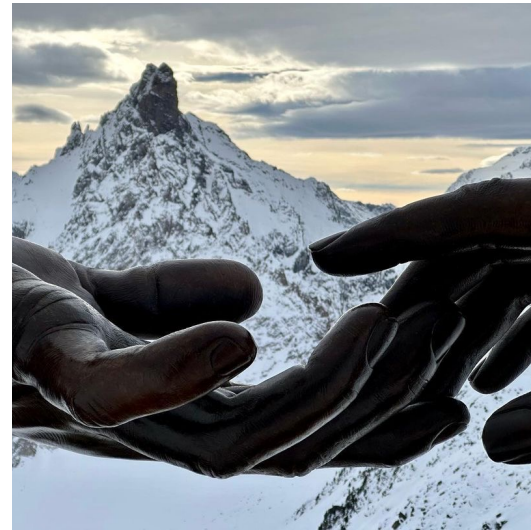
[oriane_blc](#)



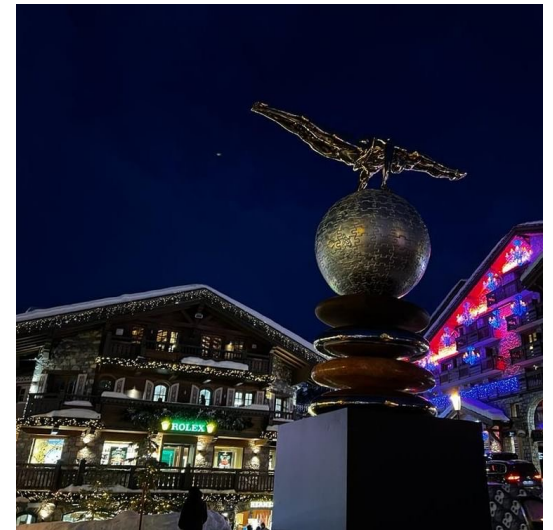
[kizo_gs](#)



[emilien_erd7](#)



[laug_paul](#)



[kalumaski](#)





LORENZO QUINN

Son of Oscar-winning actor Anthony Quinn, Lorenzo Quinn was born in 1966 in Rome. With his father, he discovered the Catalan surrealist figures who attracted him and awakened his imagination. After studying at the New York Academy of Fine Arts and a brief career as an actor, where he played Salvador Dalí, he devoted himself fully to his art.

Sculpting by observing the energy of life, Lorenzo Quinn's creative ideas come quickly. He generally conceives each work in writing: a poetic text is associated with each of his projects.

The contemporary Italian sculptor has gained international recognition in recent years. He is particularly noted for his skilful use of the hands in his works, which convey genuine emotion as well as concepts such as love and faith.

« I wanted to sculpt the part of the human body that is considered the most difficult and technically demanding. The hand has many powers, to love, to hate, to create, to destroy ».

Lorenzo Quinn's sculptures are exhibited in cities around the world, including major commissions from corporations and philanthropic organisations. Beyond being an artist, Lorenzo Quinn wishes to establish a dialogue with his viewers through an intelligible and universal language.



« THE GREATEST GOAL »

HYUNDAI – FIFA WORLD CUP QATAR 2022

For more than 30 years, Lorenzo Quinn has amazed the world with his creative works of art. From gravity-defying sculpture to monumental public art, he has installed pieces around the world.

As the world looks to Qatar for the World Cup, the artist has installed a monumental work with a strong, universal and intergenerational message.

« I believe it is our duty to leave a better world behind ».

Through his sculpture, he channels his ongoing commitment to climate change by challenging the use of traditional materials and introducing innovation into every step. What better opportunity for him to amplify his narrative than at this historic moment in Qatar to reinforce his vision of a world united for sustainability. To encourage everyone to be more in tune with our environment and what surrounds us.

« We should all work together to achieve a single goal of universal sustainability. »

Discover the creation process : <https://bit.ly/3VbzpAk>

Press talks about it : <https://bit.ly/3AICdNe>



PRESS TALKS ABOUT IT

146
INTERVIEW

his band, which included a young Adam Sandler. He acted alongside his father in the 1988 film *Stradivari*, but it was the once-in-a-lifetime opportunity to play the title role in *Dali* that set his course. Much as he enjoyed impersonating his hero, he realised that in his own painting, "I was just doing a bad copy of something a genius had done before." Moreover, as he admits candidly, "I realised that I was attracted to music and to acting for the wrong reasons – not because I loved the craft but because of what came with that – the popularity, the glamour." Sculpting, meanwhile, which he was already tackling, "brought no glamour and it was very difficult".

But then, his creativity caught fire: "I read a beautiful poem called *Footprints in the Sand*, which had this image of the hand of God, and I thought, I have got to make a sculpture about this." He placed the text alongside the sculpture and people responded powerfully. Quinn comments: "In the end, life puts you in your place."

His heroes are Michelangelo and Gian Lorenzo Bernini; the 19th-century French virtuoso Jean-Baptiste Carpeaux and the great master, Auguste Rodin. Quinn calls his own style of sculpture "symbolic realism". He explains: "My sculptures carry a message. Each one has a purpose, to convey this message, whether it is about unity, family, decision-making, life or death. I need to know first what I want to talk about." Once he has settled on a subject, he writes, and it is from the metaphors and adjectives in his writing that images arise. As he puts it: "The sculpture is the visual explanation of the text."

Quinn shows me an enormous sculpture called *Moments* that takes up the full height of his second warehouse. It consists of a thick steel rope knotted at various points, with five human figures climbing upwards. Quinn explains: "The rope represents your life line. And climbing a rope is made easier with knots in it. It is also easier to climb your life if there are moments to cling onto – the moment you get married, the moment you fall in love, the moment your parents die – these are the knots that help you." Within the warehouse, another sculpture, *Reach*, is propped: a steel ladder with two bronze figures – a man at the bottom, holding the ladder, and a woman climbing to the very top. Quinn says, "I wanted to be



CLOCKWISE FROM LEFT
Liquid metal is poured into a cast at the foundry in Spain; Lorenzo Quinn; Support reaches out from the Grand Canal, Venice; Four Loves was inspired by CS Lewis's book



a little provocative – unfortunately, in the world it is usually the other way round!" He then adds, shamefacedly, "My wife definitely holds my ladder. She has been holding my ladder for 30 years!"

The clearer and simpler the image, the better. "Communication is key," Quinn explains. "That is why I make art. We all have the same basic concerns, all over the

world. We all want to feel loved, we want to love, we want to care for our loved ones. And then the rest starts – politics, then money – but if you don't have the basic things, you can't be happy. I always appeal to that basic human factor."

It was this immediate connection with his audience that Udi Sheleg, Chief Executive of Halcyon Gallery, recognised in Quinn's work when he first saw it in an exhibition in Barcelona in 1997: "It was a visceral impression that his work was universal, speaking directly to people's emotions. His work catches you at first glance. In the last four or five years, he has started looking outside the microcosms of the individual life and to global issues."

HARRODS.COM

Zoom sur Lorenzo Quinn

Si son nom ne vous dit rien, ses sculptures de mains monumentales émergeant des canaux de Venise vous sont sûrement familières. Retour rapide sur la carrière d'un représentant majeur de la sculpture figurative.

6 mai 2020 Laurianne Simonin



La sculpture « Support » de Lorenzo Quinn à Venise, le 19 mai 2017. L'œuvre, avec deux mains tenant l'hôtel Ca Sagredo a fait partie de la 57e Exposition internationale d'art de la Biennale de Venise, et vise à mettre en évidence le changement climatique (détail), image © Adam Berry / Getty Images

Art d'Egypt's exhibition sets contemporary artworks among the Pyramids of Giza

The 'Forever is Now' exhibition features monumental artworks



'Together' by Lorenzo Quinn. ©Pixelle Photography.

À Venise, des mains géantes contre le changement climatique

Par Agathe Lautréamont • le 17 mai 2017

Depuis maintenant quelques jours, la ville de Venise est au cœur de l'attention du petit monde bouillonnant de l'art. Et pour cause ! Le coup d'envoi de la Biennale de Venise a été donné le 13 mai dernier, un événement consacré à l'art sous toutes ses formes, couru et surtout célébré dans le monde entier. L'occasion pour de nombreux artistes de présenter leurs dernières œuvres. Mais depuis quelques jours, les réseaux sociaux n'ont d'eux que pour une œuvre en particulier : des mains gigantesques s'extrayant des eaux de la Cité des Doges...



PUBLICATIONS

BARNEBYS: <https://bit.ly/3OxdX6k>

BEAUX-ARTS: <https://bit.ly/3B5dtz9>

IDENTITY: <https://bit.ly/3ONDFE5>

HARRODS MAGAZINE : <https://bit.ly/3XHBWnR>

EXCELLENCE MAGAZINE : <https://bit.ly/3ichriM>

VANITY FAIR ON ART : <https://bit.ly/3EshLI>

GALERIES BARTOUX

A FAMILY ADVENTURE

Galleries Bartoux is an international group with 20 galleries located in France, Monaco, London, New York and Miami representing a whole new generation of artists.

For 30 years, the Bartoux family's artistic approach has been to interact with the public by making them aware of art while opening a window on new and exciting cultural values. The Bartoux Galleries are open spaces. They are places of exchange and meeting between enthusiasts from different backgrounds.

The group offers an artistic selection that includes works by great masters, established artists and emerging artists. It is this alchemy that creates the DNA of the Galleries Bartoux group.

With an unconditional love of men and women in the arts, and an in-depth knowledge of the artistic professions, Galleries Bartoux helps to push back prejudices and eliminate differences.

GALERIES BARTOUX & COURCHEVEL 1850

For almost 20 years now, the Galerie Bartoux Courchevel 1850 has had the pleasure of welcoming collectors and art lovers to the Espace Diamant.



CONTACTS

LAURA BARTOUX

Responsable Communication - Galeries Bartoux

laura.bartoux@galerias-bartoux.com

CLÉMENCE LANGLOIS

Social Media Manager & PR - Galeries Bartoux

media@galerias-bartoux.com

GALERIES BARTOUX COURCHEVEL 1850

Espace Diamant, 73120 Courchevel 1850

courchevel@galerias-bartoux.com

+33 (0)4 79 55 25 01

 [lorenzoquinnartist](https://www.instagram.com/lorenzoquinnartist)

 [lesgaleriasbartoux](https://www.instagram.com/lesgaleriasbartoux)

GALERIES
BARTOUX